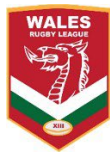
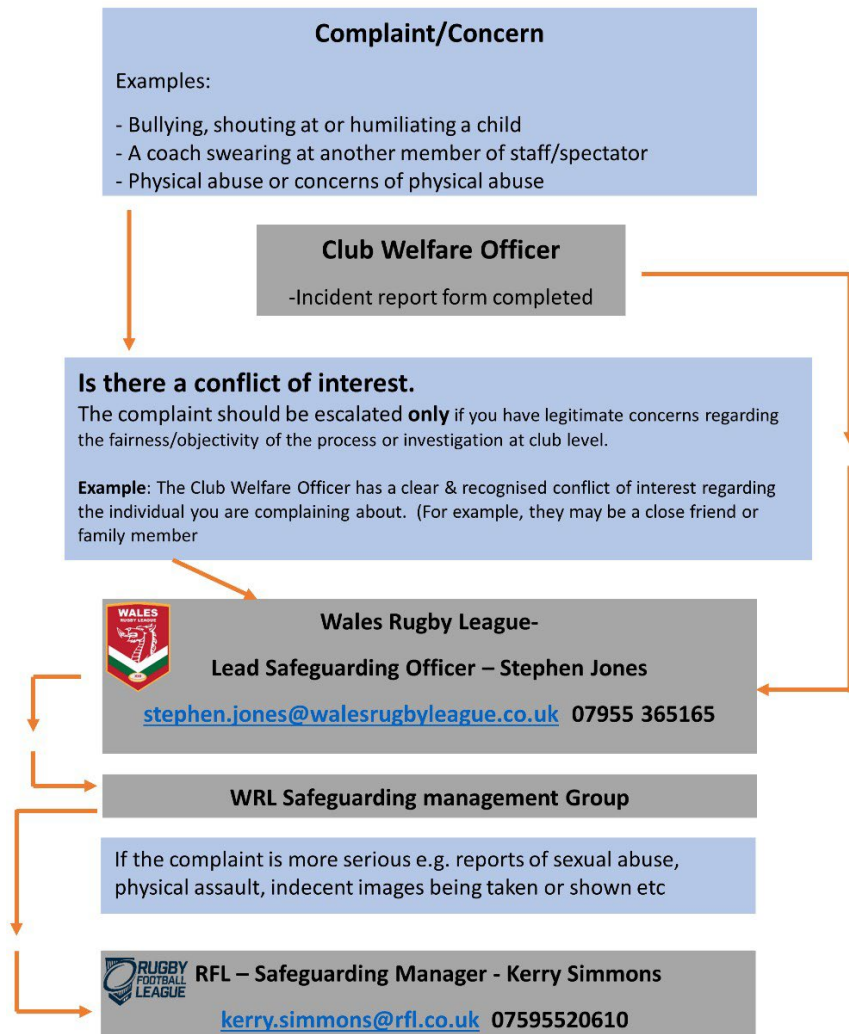


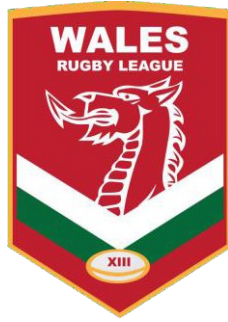
Young Persons' Safeguarding Policy

Reviewed and Update: Mark Jones, Stephen Jones 2023 Next Review: January 2025



Wales Rugby League Safeguarding and Child Protection Reporting Process





CONTENTS:

	PAGE
WHAT IS SAFEGUARDING	3
TYPES OF ABUSE	3
WHY DO WE HAVE SAFEGAURDING IN PLACE?	3
WHAT WE DO TO ENFORCE SAFEGAURDING?	4
HOW WALES RUGBY LEAGUE LOOK AFTER CHILDREN?	5
HOW CLUBS SUPPORT SAFEGUARDING	5
HOW TO REPORT A CONCERN	6
CONTACTS	7

WHAT IS SAFEGUARDING?



“Safeguarding is the action that is taken to promote the welfare of children and protect them from harm.”

(NSPCC website, 2016)

SAFEGAURDING MEANS:

- Protecting children from abuse and maltreatment.
- Preventing harm to children’s health or development.
- Ensuring children grow up with the provision of safe and effective care.
- Taking action to enable all children and young people to have the best outcomes.

TYPES OF ABUSE INCLUDES:

- **Physical Abuse:** A child is physically hurt or injured by an adult or an adult gives drugs or alcohol to a child.
- **Neglect:** A child’s basic physical needs are consistently not met, or they are regularly left alone or unsupervised.
- **Sexual Abuse:** An adult or peer uses a child to meet their own sexual needs.
- **Emotional Abuse:** An adult persistently criticises, denigrates or puts unrealistic expectations on a child or subjects them to abuse due to their gender, race, age, disability, religion and faith and sexual orientation.
- **Bullying:** An adult or peer persistently or repeatedly uses hostile and/or intimidating behaviour towards a child. For more information see WRL Anti Bullying Policy.

WHY DO WE HAVE SAFEGAURDING IN PLACE?

- Every child is taking part in the sport in a fun and safe environment due to strong safeguarding measures and practice.
- Make sure that abuse, be that sexual, physical and/or emotional, as well as bullying, does take place in Rugby League.
- This document is a guide for the game as a whole and provides information to everyone in Rugby League, whether working as a professional or as a volunteer.
- All incidents, allegations, poor practice or abuse will be taken seriously and responded to quickly.
- Working in partnership with all parties to make sure that information and training opportunities are available for those working with children.
- Allow children to excel in a safe environment that will make more children want to play rugby league.



- Everyone involved in Rugby League will be able to get hold of policies, training and support to ensure they are able to carry out this policy.
- All children, whatever their age, disability, faith, gender, race or sexual orientation have the right to be protected from abuse.
- More children taking part in Rugby League in a safe, fun and supportive environment
- If things go wrong, we will deal with it, but we will also put things in place to prevent issues from arising
- We have a duty of care to protect people taking part in Rugby League in Wales.

WHAT WE DO TO ENFORCE SAFEGAURDING?

Safeguarding is a big area in the game of Rugby League and **ALL** those in contact with children have a duty of care to ensure that all children:

ARE:

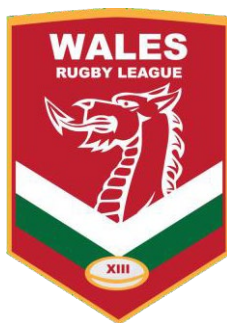
- Able to take part in a way that is suitable to their age and ability.
- Coached and trained by qualified staff.
- Encouraged to achieve their full potential at all levels.
- Instructed and shown how to behave, both on and off the pitch.
- Respected in any playing and training situation and any other Rugby League environment.

ARE NOT:

- Pushed to play in too many games, or training sessions, as to become a threat to their physical or emotional well-being.
- At risk to emotional (verbal) abuse or bullying from any person, including from the touch lines.
- At risk to physical abuse, bullying or pressure from any person.
- Subjected to sexual abuse.
- Subjected to neglect.
- Subjected to poor practice.

HOW WALES RUGBY LEAGUE LOOK AFTER CHILDREN?

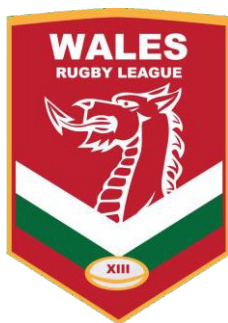
- Respect and promote the rights, wishes and feelings of children.
- Duty of care for children, safeguard their well-being and protect them from abuse and poor practice.



- Recruit, train and supervise our employees and volunteers to adopt best practice to safeguard and protect children from abuse, and themselves against false allegations.
- Respond quickly to all allegations.
- Require all staff and volunteers to work with our Safeguarding Policy, the RESPECT Code of Conduct and the Rugby League Coach's Code of Conduct.
- Investigate any concerns and lead / support partners to find out if abuse has taken place.

HOW CLUBS SUPPORT SAFEGUARDING:

- Treat all children equally, and with respect and dignity.
- Promoting a culture which ensures children are listened to and respected as individuals.
- Always put the safety of the child first, before winning or achieving goals.
- Making Rugby League fun, enjoyable and promote fair play.
- Physical exertion (e.g. running around the pitch should not be used as a method of punishment).
- Always working in an open space (e.g. avoiding private or closed off situations).
- Maintaining a safe and professional distance, both physical and emotional, with children.
- Build balanced relationships based on mutual trust which allows children to share in the decision-making process.
- Not having sexual relationships with children at the club including 16 or 17 year olds if you are in a position of trust (this includes all coaches and other staff or volunteers at a club).
- Being an excellent role model – this includes not smoking or drinking alcohol in the company of children whilst undertaking any role within a coaching setting.
- Promote a healthy diet and condemning the use of illegal and performance enhancing substances.
- Promote equality and diversity
- Work in partnership with children, their parents and other agencies to protect children.
- Make sure everyone knows how to report any concerns.



Safeguarding and Child Protection Reporting Process

What is a Complaint or Concern?

- Bullying, shouting at or humiliating a child or any individual.
- A coach swearing / abusing another member of staff / spectators.
- Physical abuse or concerns of physical abuse.

How to report a complaint or concern

Report to Club Welfare Officer

- The Welfare Officer will complete an incident report form and pass to the Lead Safeguarding Officer: Stephen Jones
stephen.jones@walesrugbyleague.co.uk

Should there be a conflict of interest?

- Where the Welfare Officer has a clear, recognisable conflict of interest or relationship with the individual(s) concerned.

Report to Lead Safeguarding Officer

- Lead Safeguarding Officer: Stephen Jones
stephen.jones@walesrugbyleague.co.uk
- Mobile Number 07955 365165
- Who will report the incident to the Safeguarding Management Group
- If the complaint is particularly serious the matter will be reported to The

Report to Lead Safeguarding Manager

- RFL Safeguarding Manager: Kerry Simmons kerry.simmons@rfl.co.uk
Telephone 07595520610



CONTACTS:

Stephen Jones
Wales Rugby League Lead Safeguarding Officer
Sport Wales
Sophia Gardens
CARDIFF
CF11 9SW

Email – stephen.jones@walesrugbyleague.co.uk
Mobile – 07955 365165

Kerry Simmons
RFL Lead Safeguarding Officer
Gate 13, Rowsley Street
Etihad Campus
MANCHESTER
M11 3FF

Email: kerry.simmons@rfl.co.uk
Mobile - 07595 520610

NSPCC
CPSU, NSPCC National Training Centre
3 Gilmour Close, Beaumont Leys
Leicester, LE4 1EZ

Email - cpsu@nspcc.org.uk
NSPCC Child Protection Helpline - 0808 800 5000
Phone: 0116 234 7278
Website: www.thecpsu.org.uk